



PBHA

Panhandle Behavioral
Health Alliance

2023 PBHA Summit

**Stakeholder feedback about
PBHA Value:**

**Neutral supportive
infrastructure for improved
collaboration within the Alliance
and surrounding frontier
communities in the Texas
Panhandle.**





The PBHA Vision

Every person in the Texas Panhandle with a mental health or substance use issue will have a fair and just opportunity to get the help they need when and where they need it.

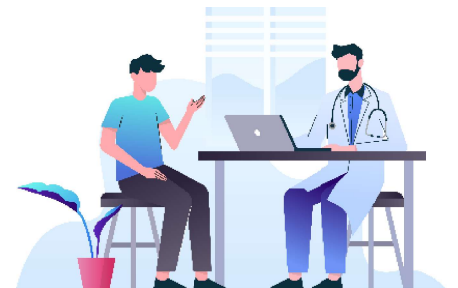
Mission: *To convene, facilitate, & support communities for improved access to mental health care**



Community Wellness and Access



Justice



Provider Shortages



Backbone Organization

[Collectiveimpactforum.org](https://collectiveimpactforum.org)

- Shared Goal
- Support Aligned Activities
- Shared Measurement/Success
- Continuous Communication
- Mobilize funding

5

Challenges and Opportunities

With PBHA Participation

- Meetings and Surveys
- Leadership development
- Become a **Change Agent** to improve mental health and wellbeing in our community!

6

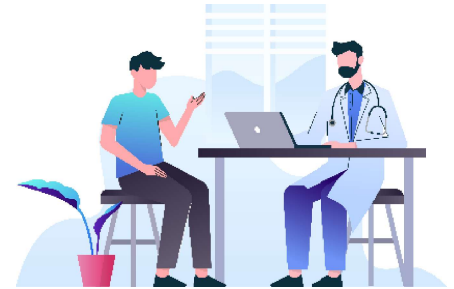
2024 Review:



Community Wellness
and Access



Justice



Provider
Shortages

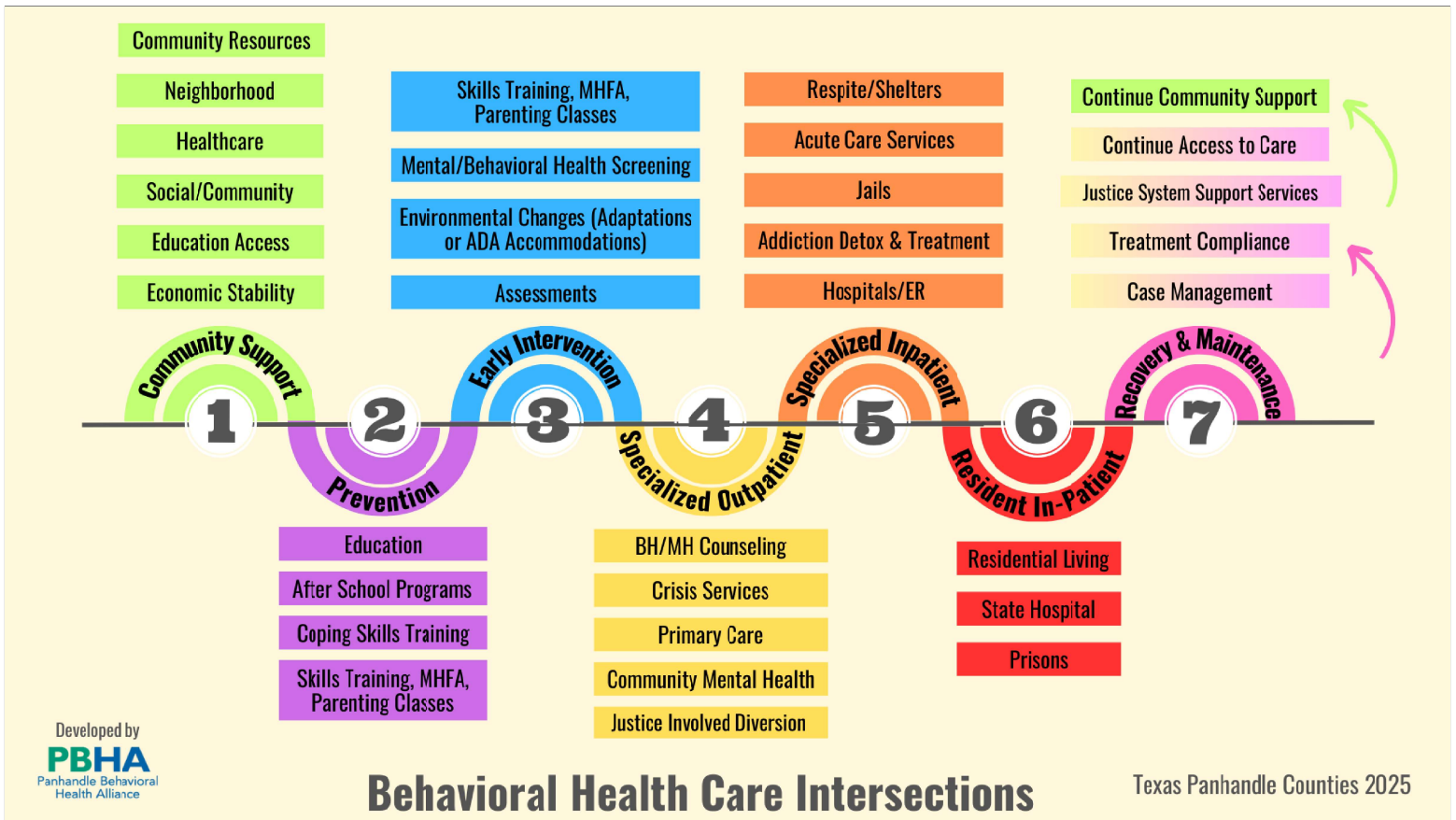


Focus Area: Community Wellness/Access

- PanhandleMentalHealthGuide.org



- Other Trainings (WRAP, MHFA, TIC)



Focus Area: Community Wellness/Access

- Frontier MH Symposium (w/ AHEC)
- Frontier Technical Assistance and Consultations*

* contact staff



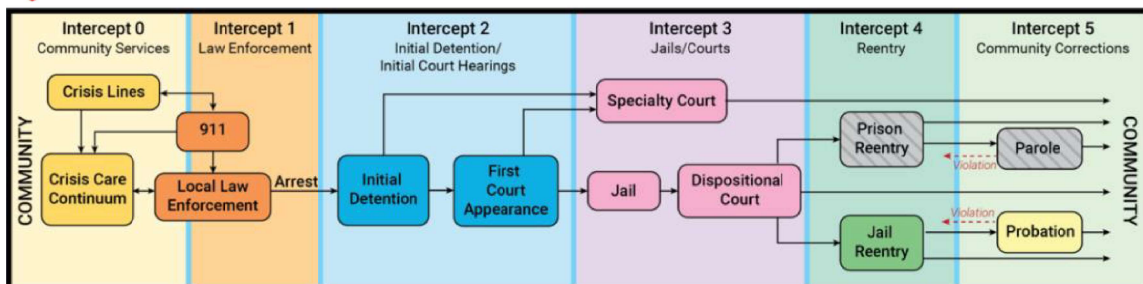
Focus Area: Justice



Enhancing continuity of care and systemic coordination for justice-involved individuals with mental illness and substance use issues.

11

Focus Area: Justice



Abreu, D., Parker, T. W., Noether, C. D., Steadman, H. J., & Case, B. (2017). Revising the paradigm for jail diversion for people with mental and substance use disorders: Intercept 0. *Behavioral Sciences & the Law*, 35(5-6), 380-395. <https://doi.org/10.1002/bsl.2300>
© 2019 Policy Research Associates, Inc.

- Facilitate & Support Sequential Intercept Mapping (SIM) Priorities
 - Potter-Randall Counties (*Reentry Workshop/WG*)
 - Dallam-Hartley-Moore Counties (*Transportation--Moore*)
 - Hutchinson County

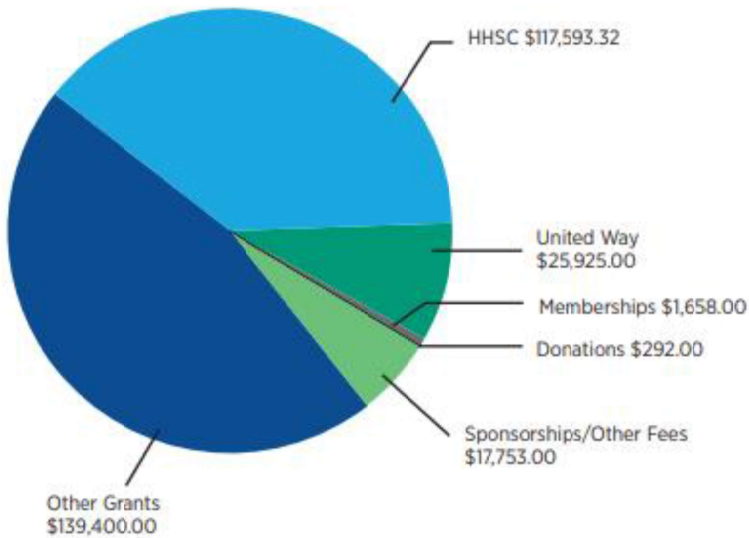
12

Focus Areas: Provider Shortages

- Convene and facilitate employers and educators – BH Pipeline
- MH & BH Clinical Licensure Stipend available from PBHA
*opens in Spring
July 10, 2025 (deadline)*



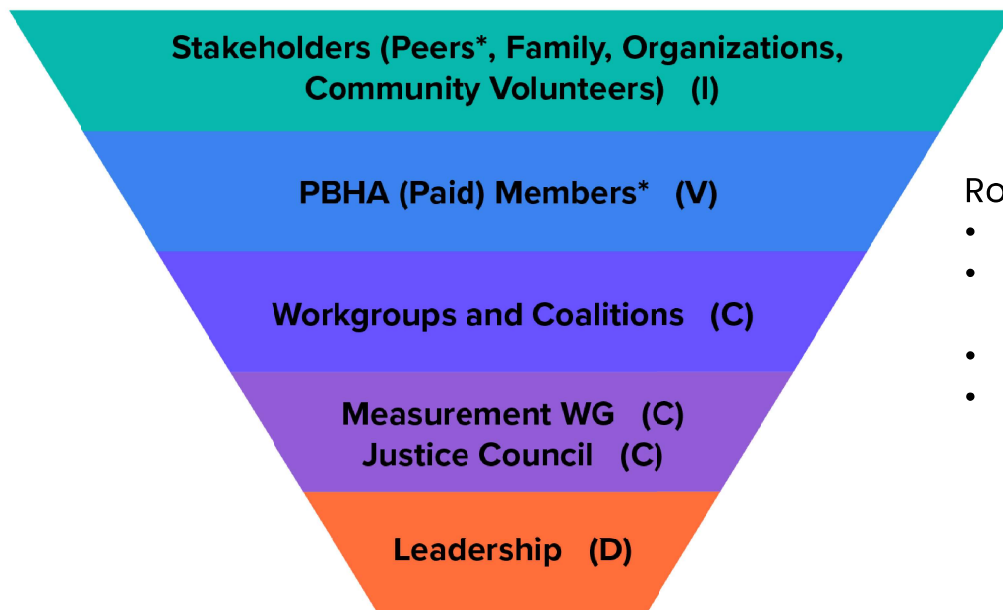
PBHA Funding Sources **FINANCIALS** January 2024 - December 2024



FUNDING SOURCES

- HEALTH AND HUMAN SERVICES COMMISSION-TX
- UNITED WAY
- MEMBERSHIPS
- DONATIONS
- SPONSORSHIPS AND OTHER FEES
- OTHER GRANTS

Alliance Composition and Roles



Roles:

- **I**nform/Be Informed
- **V**oice/integral to discussion
- **C**onsult/Advise
- **D**ecision making, including strategic focus, resource allocation and monitoring progress

15

Panel Discussion

Maude McCullough, LPC

- Deaf Smith County Mental Health Coalition

Libby Moore, LPC-S

- Texas Panhandle Centers
- PBHA Leadership

Katie Strohmeier

- Moore County Behavioral Health Advisory Team

Julie Winters

- Hutchinson County Mental Health Coalition
- Aspire A Mindful Place

16

Q&A and Feedback please!



Join Us!

We welcome everyone who wants to help achieve this vision.

